

Evidence for Decision-Making in Education

Campbell Collaboration
May 2008
Ben Levin, OISE, Canada

Outline

- Context
- What we know
- What we need to learn
- What we need to do
- Both general and education specific

Context

- Rapid growth in interest in KM
 - Governments and education sector
- Many activities underway
 - Private and public sector
- Confusion about what KM is
- Lack of empirical evidence on impact

What We Know - KM Generally

- Knowledge use is a social process
- Shaped by many factors other than the evidence itself

What We Know - KM Generally

- Knowledge use is a social process
- Shaped by many factors other than the evidence itself
- Evidence matters, but usually gradually over time
- Hard to sort out impact of evidence from other factors

Continued...

- Harder to change practice at scale than to change policy
- Personal contacts have more impact than reports and publications
- Knowledge use depends on demand as well as supply, and on capacity to find and use
- Role of third parties is underestimated

What We Know - Education

- Education dominated by past practice, whether justified or not
 - Everyone is an expert....
- Practice is highly individual
- Knowledge base is growing significantly but still quite limited
- Similarly, demand is growing
- Take-up capacity is very weak

What We Need to Learn

- Research use is still not a research-informed enterprise
- More conceptual work
- More empirical work
- Better research methods

Conceptual Needs

- What do we mean by 'research' and by 'use'?
 - Many different ideas about this
 - Though also common elements
- Knowledge mobilization, knowledge transfer, knowledge exchange, knowledge management, knowledge translation...

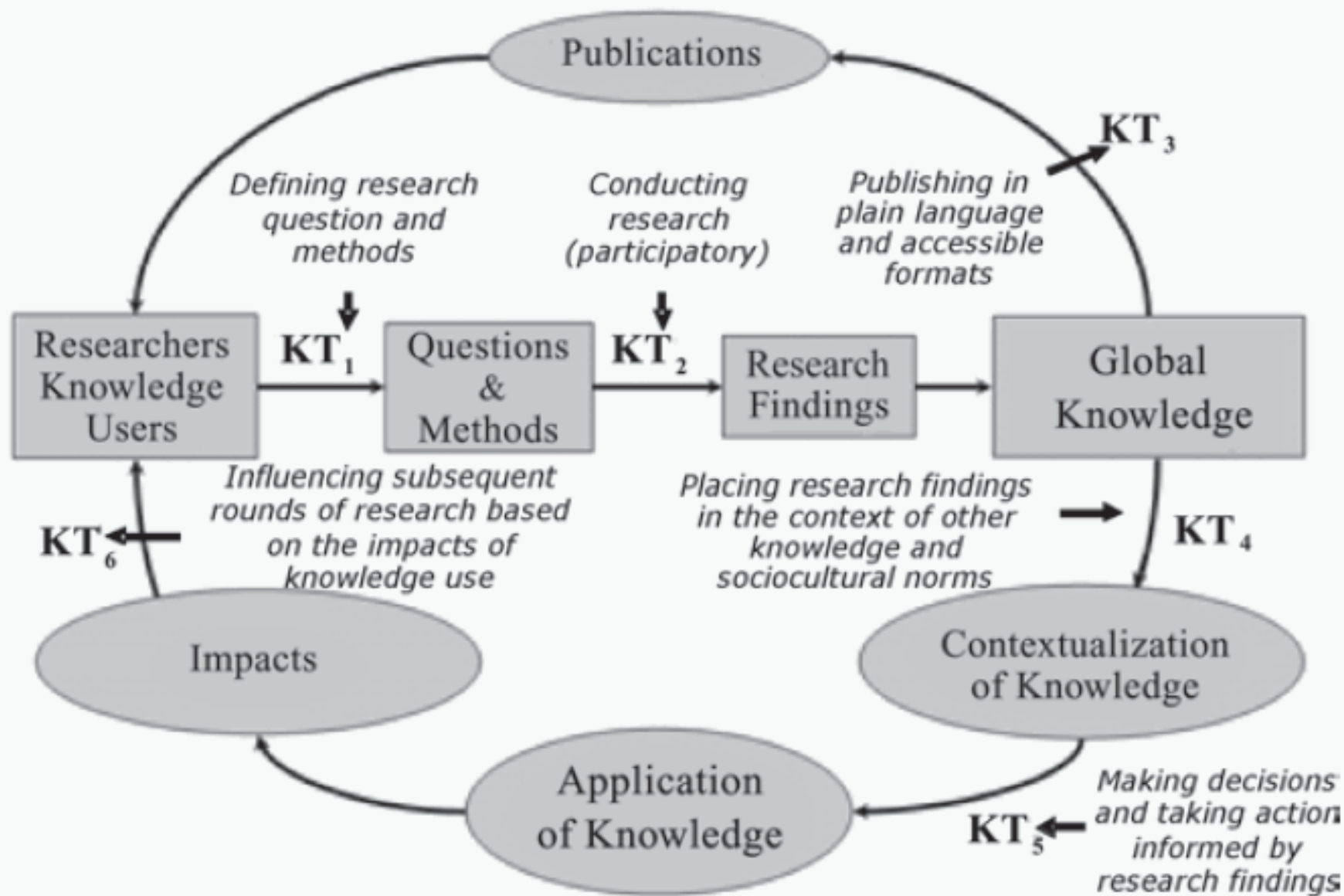


Figure 1. CIHR research cycle superimposed by the six opportunities to facilitate KT

(Source: Canadian Institutes of Health Research Knowledge Translation [KT] within the Research Cycle Chart. Ottawa: Canadian Institutes of Health Research, 2007. Reproduced with the permission of the Minister of Public Works and Government Services Canada, 2007).

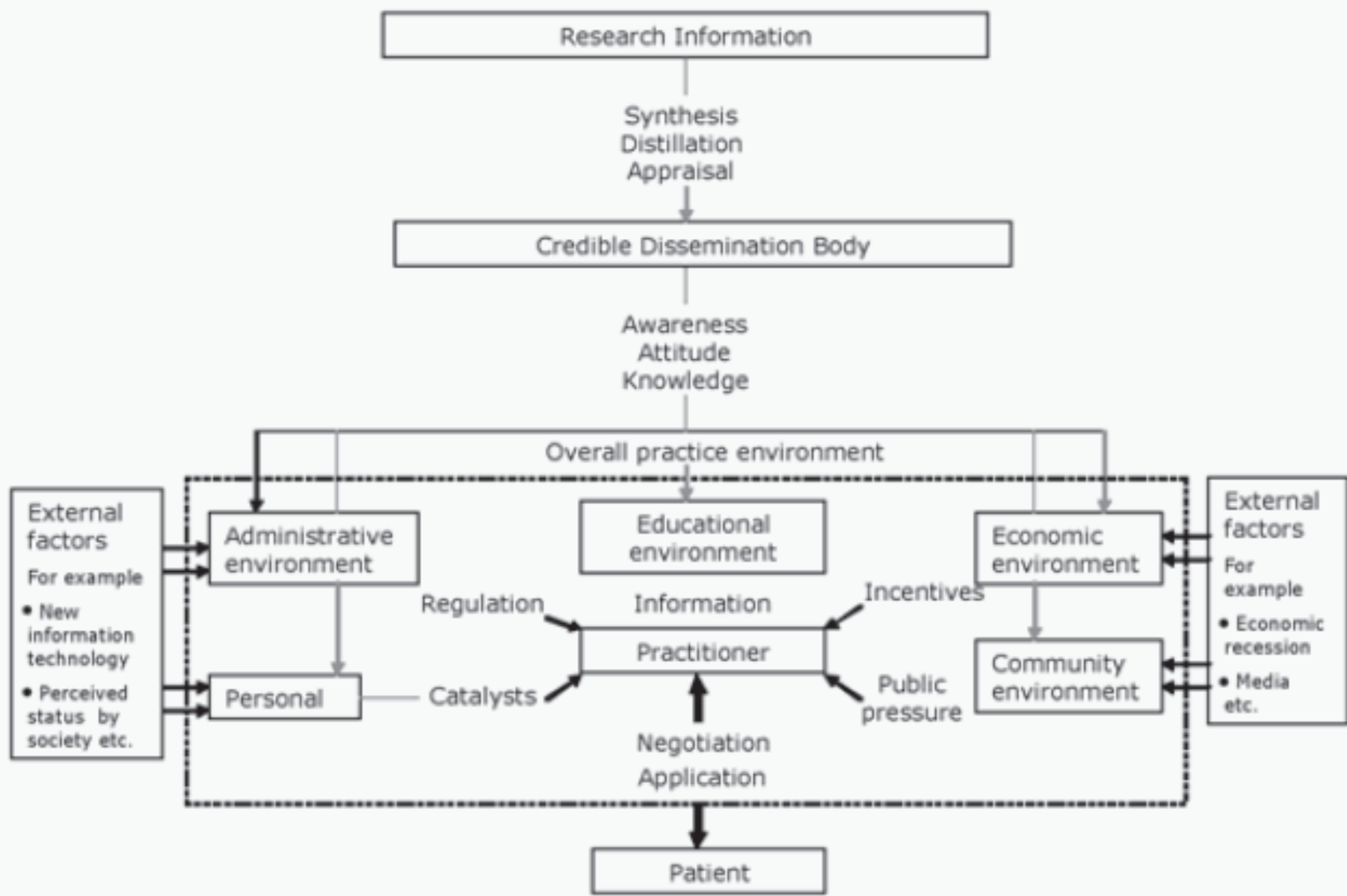


Figure 4. The Coordinated Implementation Model

(Reprinted from *The Milbank Quarterly*, Vol. 71, Lomas, J., Retailing research: Increasing the role of evidence in clinical services for childbirth, pg. 439–475, copyright © 1993, with permission from Blackwell Publishing)

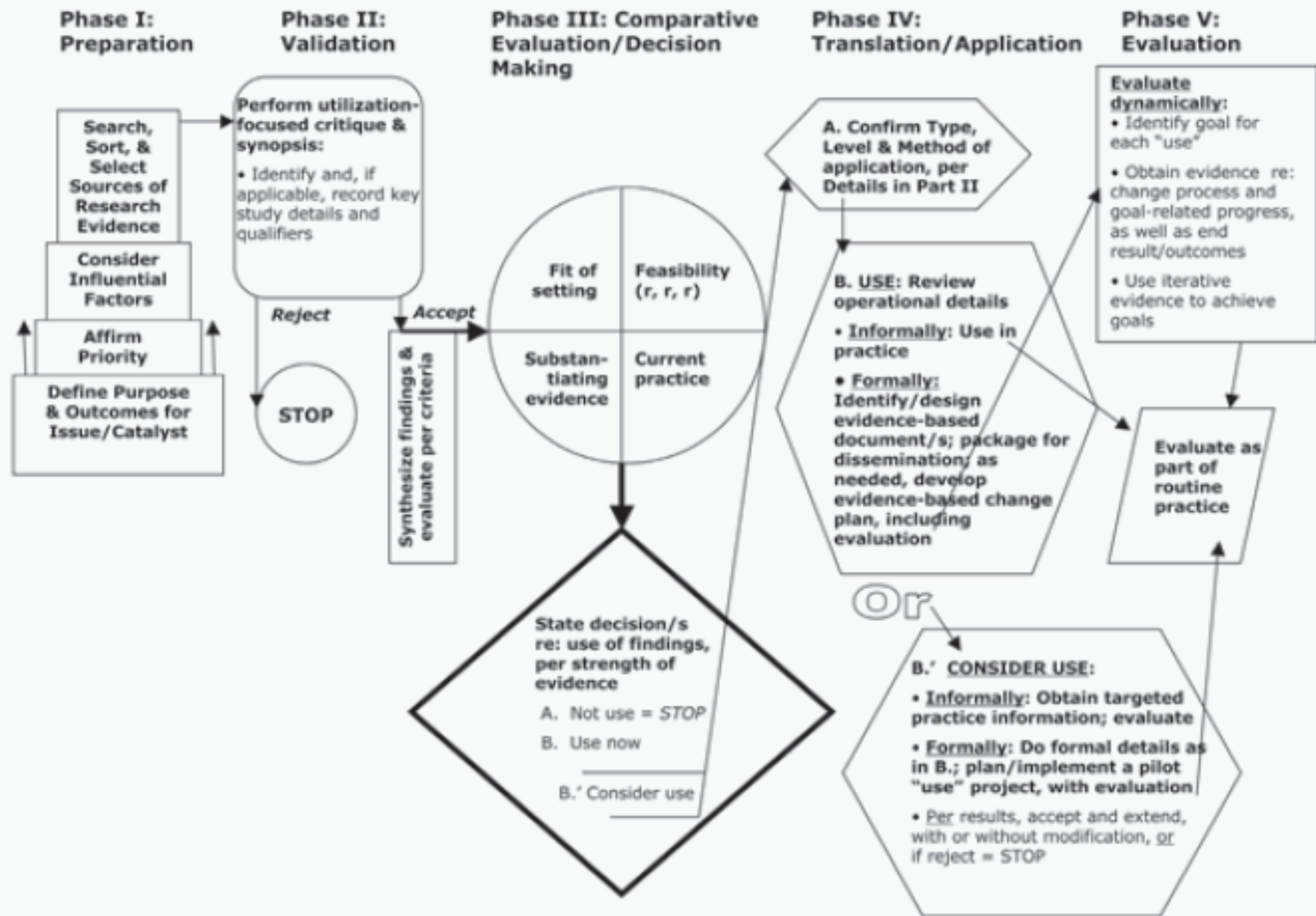


Figure 5. The Stetler Model of Research Utilization

(Reprinted from *Nursing Outlook*, Vol. 49, Stetler, C. B., Updating the Stetler model of research utilization to facilitate evidence-based practice, pg. 272–279, copyright © 2001, with permission from Elsevier)

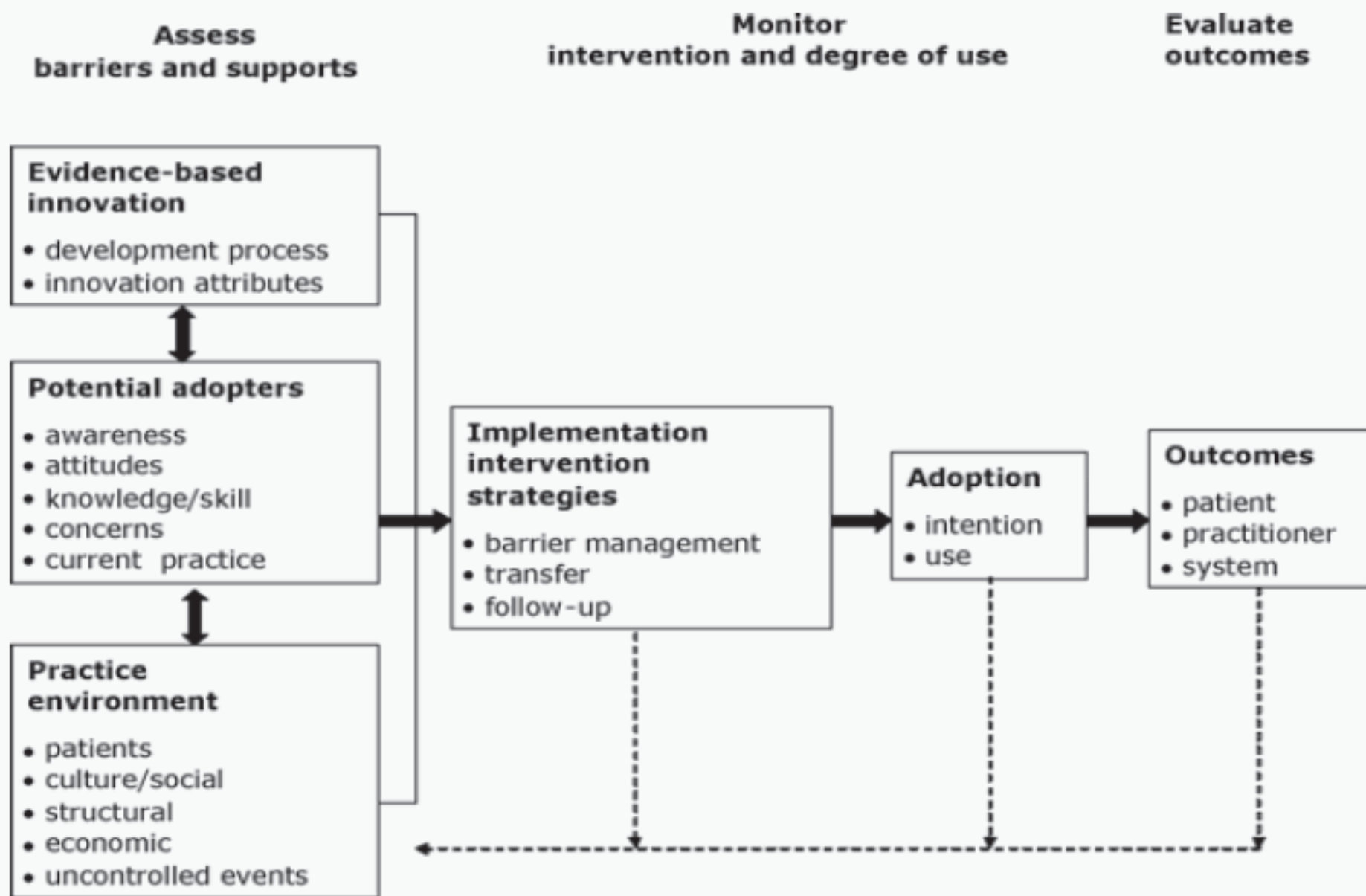


Figure 2. The Ottawa Model of Research Use

(Reprinted with permission from *Canadian Journal of Nursing Research*, Vol. 36, Graham, I. D. & Logan, J., Innovations in knowledge transfer and continuity of care, pp. 89–103, copyright © 2004.

Conceptual Needs

- Don't want or need a single framework
- But do need more dialogue across frames
- Most frames focus more on research production than on use or user organizations

Research Challenges

- More evidence needed
 - Empirical base quite limited at present
 - Too few studies and quality often low
- Better data-gathering tools and study designs
 - Challenge of measuring 'use'
- More research networks
 - Across disciplines and countries

What We Need To Do

- More KM infrastructure
 - 'producers' and 'users'
 - Effort still very limited almost everywhere
 - What research do universities do?
 - What capacity do schools have to use research?



turning research into **action**



about research impact

highlights

upcoming events

research translation

resources

faqs

KM highlights @ York

Knowledge Mobilization (KM) Services at York University are offered within three service streams - creating space, building capacity, and partnerships and collaborative activities. These streams are designed to educate and inform people about KM and support specific needs for the effective development, access, and use of new knowledge, as driven by research.

- ◆ Click [here](#) to view a presentation outlining KM services at YorkU



LOG ON

Home

Accessibility

Contact us

Find A Researcher

FAQs

Site map

Help

- » What is Social Science
- » Our Research
- » Facts and Figures
- » In Plain English
- » About ESRC
- » Funding Opportunities
- » Award Holder Support
- » Press Office
- » How do I...
- » Discussion Forums

OUR SOCIETY TODAY



Our Society Today contains news articles, interviews with directors of major ESRC investments, and focus

pieces that identify science in society. The section aims to present a balanced view over some of the areas in which social science really does make a difference.

News Articles: HIV/AIDS - pulling up the drawbridge won't work
A time for change in Northern Ireland

Voices: Kevin Morgan - schools meals researcher at the University of Cardiff

Spotlights: Seeing and believing
Meeting the Millennium Development Goals

[read more...](#)

PROVIDING A FOCUS FOR SOCIETY

The Economic and Social Research Council (ESRC) is the UK's leading research funding and training agency addressing economic and social concerns. We aim to provide high quality research on issues of importance to business, the public sector and government.

WHAT IS SOCIETY TODAY?

QUICK SEARCH

3 WAYS TO SEARCH

Only ESRC content

Any of these words

All of these words

The exact phrase

SEARCH

ADVANCED SEARCH

REGISTER HERE / LOGON

Find out more about the benefits of registering with Society Today

REGISTER HERE

LOG ON



ESRC Publications



Communications Toolkit



Knowledge Transfer Guide



Our Research



Funding Opportunities



Quick Links



Events



Sitemap

What We Need To Do - 2

- More emphasis on connections rather than products
 - Better use of third parties
- More evaluation of current efforts
- Better use of graduate students
 - Key intermediaries

Learning From Others

- Technology transfer/industry liaison

Home > Resources

Our Process

Inventors

Industry

Entrepreneurs

Students

Policies

Forms & Documents

Agreement Types

Glossary

Links

Resources

The Office of Technology Transfer is dedicated to serving UM inventors, UM students, representatives from the business community, and entrepreneurs. We realize that each of these groups has specific needs, and we have staff dedicated to providing them the specific information they need as quickly as possible. If you have any questions that are not answered in the [Resources for Inventors](#), [Resources for Students](#), [Resources for Industry](#) or [Resources for Entrepreneurs](#) sections, or if you would not classify yourself in one of those four designations, please feel free to [contact our office](#) and speak with a representative. We are always happy to talk with you, schedule informal informational meetings, etc... If you can help us get UM technology out to the world, we want to work with you.

Quick Links

[Invention Disclosure](#)

[When to Contact Us](#)

Learning From Others

- Technology transfer/industry liaison
- Think tanks
- Web 2.0 efforts
- Private sector efforts
- Social networks
- Others ???

MERN Contacts

- [Heather Hunter, MECY](#)
- [Valerie Sawchuk, MECY](#)
- [Thomas Macneill,
The MERN Journal](#)
- [Webmaster](#)

Coming Events

- [07/05/2008 - Fourth annual
Aboriginal Education
Research Forum "Shawane
Dagosiwin", Winnipeg May
7-9, 2008](#)
- [12/05/2008 - Kiskisiwin:
Remembering Stories And
Histories, the 3rd annual
Aboriginal and Northern
Studies Research
Conference](#)

Calls for Papers

No current calls for papers.

Requests for Proposals

- [No current requests for proposals.](#)

Recent Research Papers

- [01/09/2008 - Towards](#)

Welcome to the Manitoba Education Research Network

The Manitoba Education Research Network (MERN) was established to help improve the quality of education in Manitoba's schools by using research - providing educators and parents with good information and partnership opportunities for research studies, data sharing and analysis and other forms of research activities. The network is an informal organization involving Manitoba's university and college faculties of education, the department of education and other partner organizations.

MERN has a two-fold role:

1. to disseminate information about Manitoba-based education research and
2. to promote research partnership project involving faculty, field and the department.

The MERN organization is the result of collaboration and in kind contributions on the part of faculty, field and the department to:

- ♦ build a research community to support teaching and learning;
- ♦ promote cross-sector, cross-jurisdiction research in education;
- ♦ promote Manitoba-based education research; and
- ♦ use research to respond to education needs and interests in Manitoba

MERN is supported and guided by two steering groups.

1. The MERN Deans' Advisory Group includes the Deans of the Faculties of Education from the University of Manitoba (UM), the University of Winnipeg (UW) Brandon University (BU), St. Boniface Collage (CUSB), University College of the North (UCN) and Red River College (RRC). The Deputy Minister of Manitoba Education, Citizenship and Youth (MECY) and the Executive Director of the Council of Post Secondary Education (COPSE) also participate with this group.
2. The MERN Affiliate Group of partner organizations includes representation from Manitoba Association of Parent Councils (MAPC), Adult Secondary Education Council (ASEC), Manitoba Association of School Trustees (MAST), Manitoba Association of School Superintendents (MASS), Manitoba Teachers' Society (MTS), the Manitoba Council for Leadership in Education (MCLE), Manitoba Association of School Business Officials (MASBO) and the Council for School Leaders (COSL).

Each of these groups meet three times during the school year to share information, provide direction and become involved in MERN activities on

EPPI-Centre

EPPI-CENTRE

EVIDENCE LIBRARY

PARTNERS

METHODS & DATABASES

LEARNING

SITE MAP



► EPPI-Centre

The EPPI-Centre is dedicated to making reliable research findings about health, education and welfare accessible to the people who need them, whether they are making policy, practice, or personal decisions.

Most research never finds its way to the people who work in these fields or formulate the policies that relate to them. The EPPI-Centre writes and supports others to write comprehensive summaries of this research, which are known as 'systematic reviews' - they do not simply repeat the findings of the research but assess its quality, helping readers to make informed decisions.

These reviews are conducted in consultation with potential users of the reviews to ensure that the research findings are synthesised and presented in the most useful ways.

The [Evidence Library](#) contains summaries and full reports of all of the EPPI-Centre's systematic reviews.

Announcements

EPPI-Centre student work placements in systematic research synthesis

These work placements will consist of supervised work for between 20 and 30 days alongside SSRU staff on current EPPI-Centre research projects. [read more ...](#)

New MSc in Evidence for Public Policy and Practice

Designed to equip you with knowledge and practical skills in this important area. [read more ...](#)



Cautions

- Reasonable expectations
 - Research will not replace politics
- Have to have the knowledge!!
- Recognize that this takes effort
- Impact happens over time and is mediated by other social processes
- Need much 'users' input
 - Too much current focus on researchers

THE CAMPBELL COLLABORATION

Meetings and Events

[The Steering Group Connection](#)[2007 Colloquium Presentations](#)

The Campbell Library

[About Campbell Reviews](#)[Randomized Field Trials](#)

Policies and Information

[Author Guidelines](#)[Papers and Presentations](#)[Related Organizations](#)

About Campbell

[Coordinating Groups](#)[The Campbell Users Group](#)[Steering Group Members](#)[Partnerships and Affiliations](#)

Sitemap

C2-RIPE Library

Viewing Titles, Protocols, and Reviews

Registered titles with an approved protocol, review and abstract, will have a "view documents" hyperlink providing access to the available documents associated with that title. The Review Titles approved by the C2 Coordinating Groups are categorized according to the C2 domains of inquiry.

- [Education](#) - Completed Reviews: 5
- [Crime and Justice](#) - Completed Reviews: 11
- [Social Welfare](#) - Completed Reviews: 21
- [Methods](#) - Completed Reviews: 0

C2-RIPE Report Generator

For access to specific topics within C2-RIPE, please select one or more report criteria and click on [Generate Report](#) below.

Select Report Criteria

(CTRL-click to select/deselect multiple options from any list box.)

Title Keyword:

Author:

Alex R. Piquero
 Amanda Perry
 Anita Schrader McMillan
 Anthony A. Braga

C2 Domain:

Crime and Justice
 Education
 Methods
 Social Welfare

Type of Document:

Abstract
 Author Comment
 Comment
 Data

Conclusions

- An exciting time
- Doing and learning
- Campbell as an opportunity
 - More emphasis on what happens with/after the reviews

Thank You!

