

Measuring depression in offender populations. Is the Beck Depression Inventory any good?

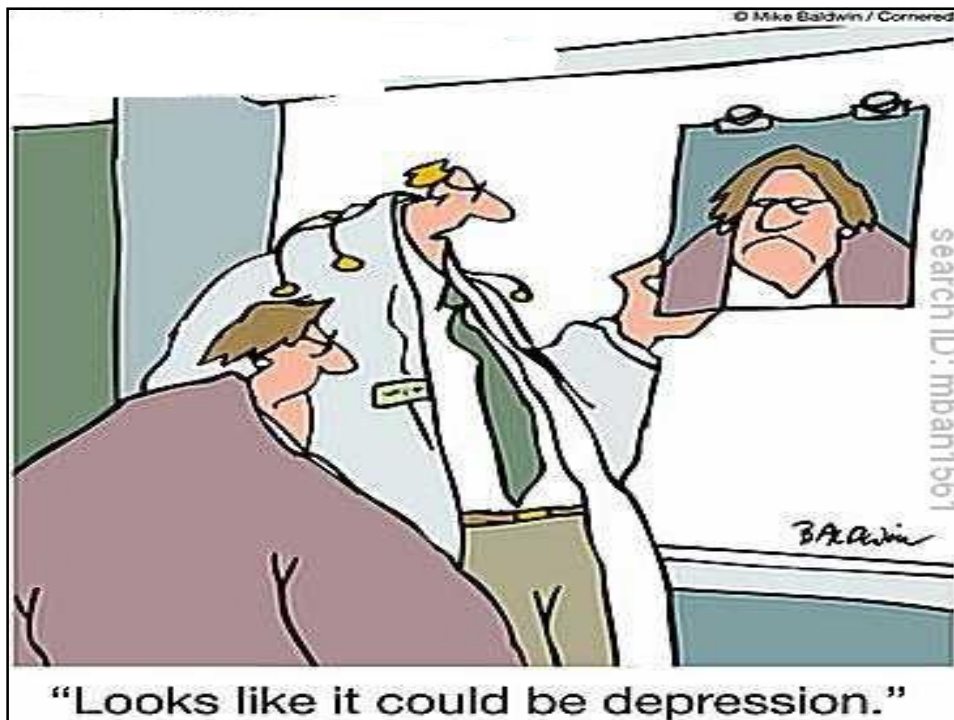
Amanda E. Perry
Centre for Criminal Justice Economics
& Psychology, University of York.
9th International Campbell Colloquium,
May 18th-20th, Oslo, Norway.

Acknowledgements

- Catherine Hewitt, Barbara Adams and Simon Gilbody, Department of Health Sciences, The University of York, UK.
- Julie Glanville and Alan Blighe, York Health Economics Consortium, University of York, UK.

What follows

- Systematic review of screening for depression
 - (Hewitt et al., 2009, under review, *Journal of Forensic Psychology & Psychiatry*)
- An example of the Beck Depression Inventory with offenders
 - (Perry & Gilbody, in press, *Journal of Social Psychiatry and Psychiatric Epidemiology*).
- Implications for future use



Depression in offender populations

- High prevalence of depression and general mental illness
 - (Frühwald & Frottier, 2005, *Lancet*, 366, 1242-1244.)
- Linked to suicide and self-harm behaviour
 - (Palmer & Binks, 2008, *Criminal Behaviour and Mental Health*, 18, 232-242).
- Generally an at risk population
 - (Shaw et al., 2004, *British Journal of Psychiatry*, 184, 263-267.)



Screening and Risk Assessment Procedures in Prisons

- Lack of validation evidence
 - (Perry & Olason, 2008, *Int, J Offender Ther Comp Criminol*)
- Difficult to identify those most in need
 - (Fruwald et al., 2002, *Wien Klin Wochenschr*, 114, 691-696).
- Use of the BDI-II in prisoner populations
 - (e.g., Boothby & Durham, 1999, *Criminal Justice Behaviour*, 26, 107-124).

The Beck Depression Inventory

- Originally developed in the 1960s
- Consists of 21 items (rated 0-3)
 - Minimal depression (0-13)
 - Mild depression (14-19)
 - Moderate depression (20-28)
 - Severe depression (29-63)

(Beck et al., 1961, *Archives of General Psychiatry*, 4, 561-571.)

Unanswered Questions...

- What do other studies tell us about the BDI-II in prisoner populations?
- Does the BDI-II make a valued contribution towards the identification of depression in prisoner populations?

The methodology: Stage One

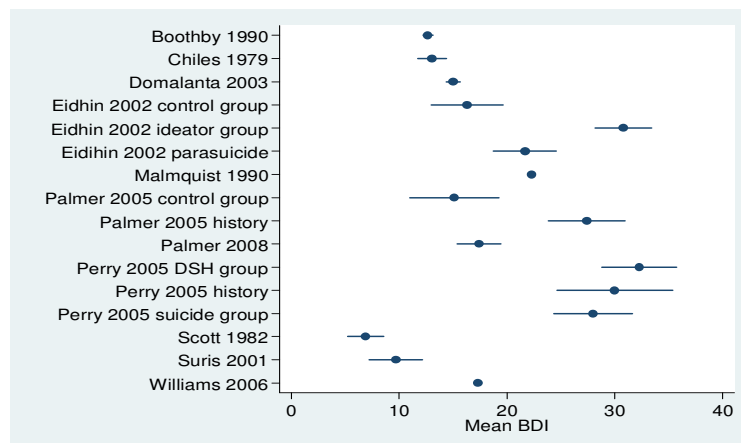
- Literature searches
 - (articles between 1806-2009, 5 databases searched)
- Pre-screening (two reviewers)
- Development of inclusion/exclusion criteria
- Data extraction and synthesis

(Hewitt et al., 2009 under review, submitted Journal of Forensic Psychology & Psychiatry)

Stage one: The systematic review.

Database	Number of records downloaded	Number of records after deduplication on loading
MEDLINE	516	507
PsycINFO	529	453
Social Services Abstracts	71	71
Criminal Justice Abstracts	316	274
National Criminal Justice Reference Service	500	91
Totals	1932	1396

The Findings: Stage One



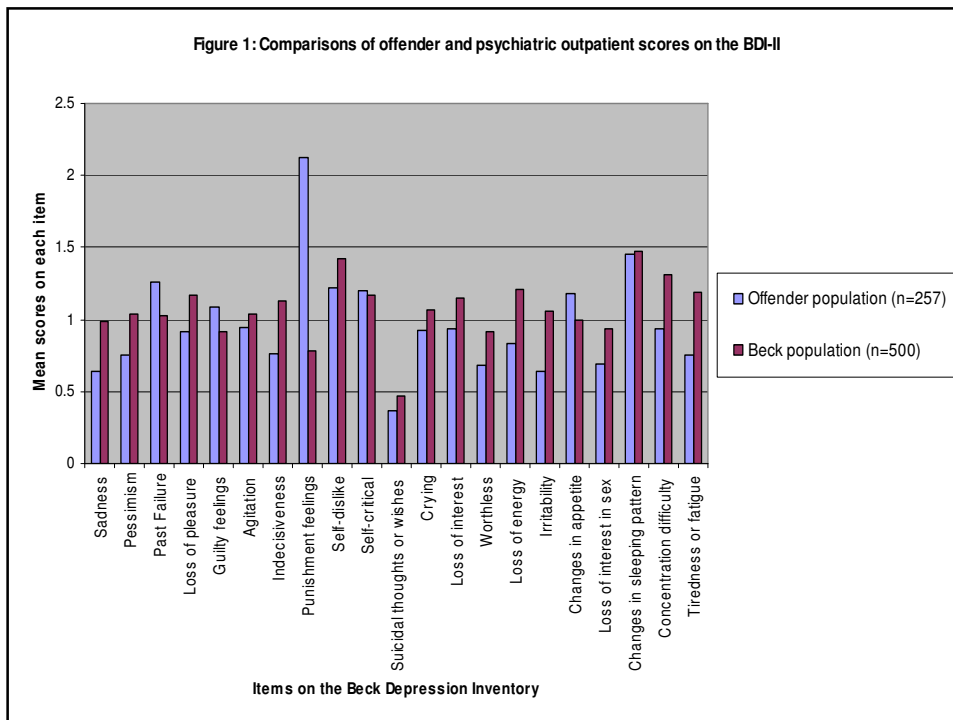
Some demographical differences

Factor	No. studies	Mean BDI group 1 (SD)	Mean BDI group 2 (SD)	Mean BDI group 3 (SD)	Findings
Gender	3	Males 22.3 12.4 (8.5) 16.5 (12.5)	Females 25.6 14.9 (9.2) 24.4 (12.0)		Consistently higher in females
Remand	3	On remand 13.6 (9.0) 18.0 (10.7) 27.2 (12.0)	Not on remand 12.2 (8.4) 16.9 (11.7) 18.3 (12.2)		Consistently higher on remand
Previous risk of suicide	4	Yes 27.86 (11.04) 27.42 (12.55) 30.80 (9.08) 30.00 (14.57)	No 15.99 (10.47) 15.13 (13.99) 16.31 (11.44) 18.78 (11.92)		Consistently higher with previous risk
Age	2	<15 10.71 (4.1)	16-20 14.1 (9.3) 16.6 (12.8)	>21 12.2 (8.3) 23.6 (12.0)	Inconsistent

The Methodology: Stage two

- Cross sectional study
- Purposive sample
- Completion of the Beck Depression Inventory

•(Perry & Gilbody, in press, *Journal of Social Psychiatry and Psychiatric Epidemiology*).



Conclusions and Implications

- Use of the BDI-II in offender populations can generate a wide range of scores
- Scores are affected by the demographics of the population
- Concerns about number of false positives

Conclusions and Implications

- Questions the cut-off scores of the BDI-II and appropriate identification of those depressed.
- When should screening occur?
- Clinically some of the items seem to be inappropriate for use
 - Punishment 'I feel I am being punished'
 - Feeling guilty 'I feel guilty most of the time'

Contact Details

Amanda E. Perry
Centre for Criminal Justice Economics and
Psychology
University of York, UK
Email: aep4@york.ac.uk

www.york.ac.uk/criminaljustice/